

Pruning Young Trees

Illustrations and photos by Edward F. Gilman, Professor,
Environmental Horticulture Department, IFAS, University of
Florida

Preventive Pruning: young trees

- Set objectives
- Determine pruning cycle and dose
- **Execute pruning plan**
 - make good cuts
 - prioritize trees with structural issues
 - temporary vs. permanent branch management



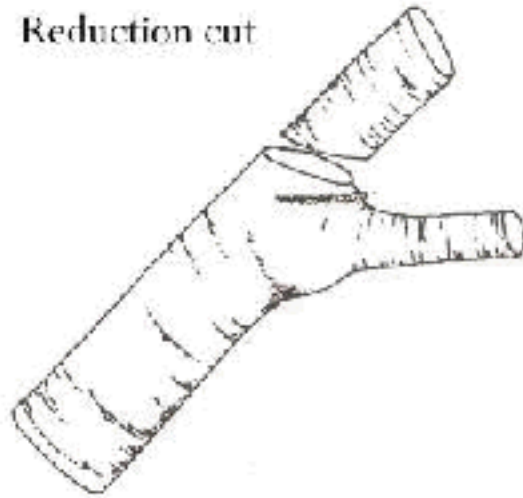
Types of pruning cuts:

Reduction cut shortens the length of a stem by pruning back to a smaller limb.

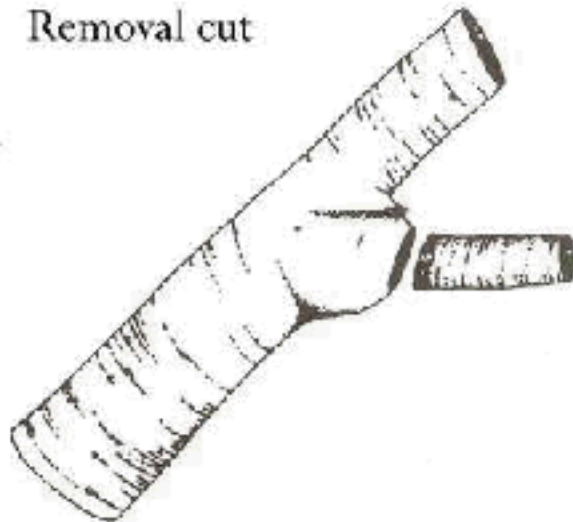
Removal cut prunes a branch back to the trunk or parent branch.



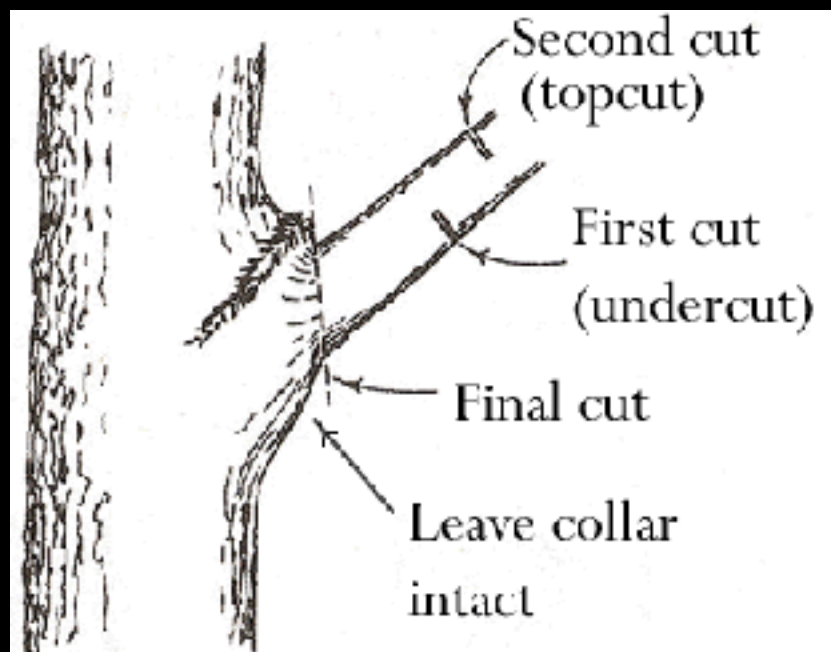
Reduction cut



Removal cut



Make good pruning cuts



Step 1

Make an undercut about 12 inches from the trunk.

Step 2

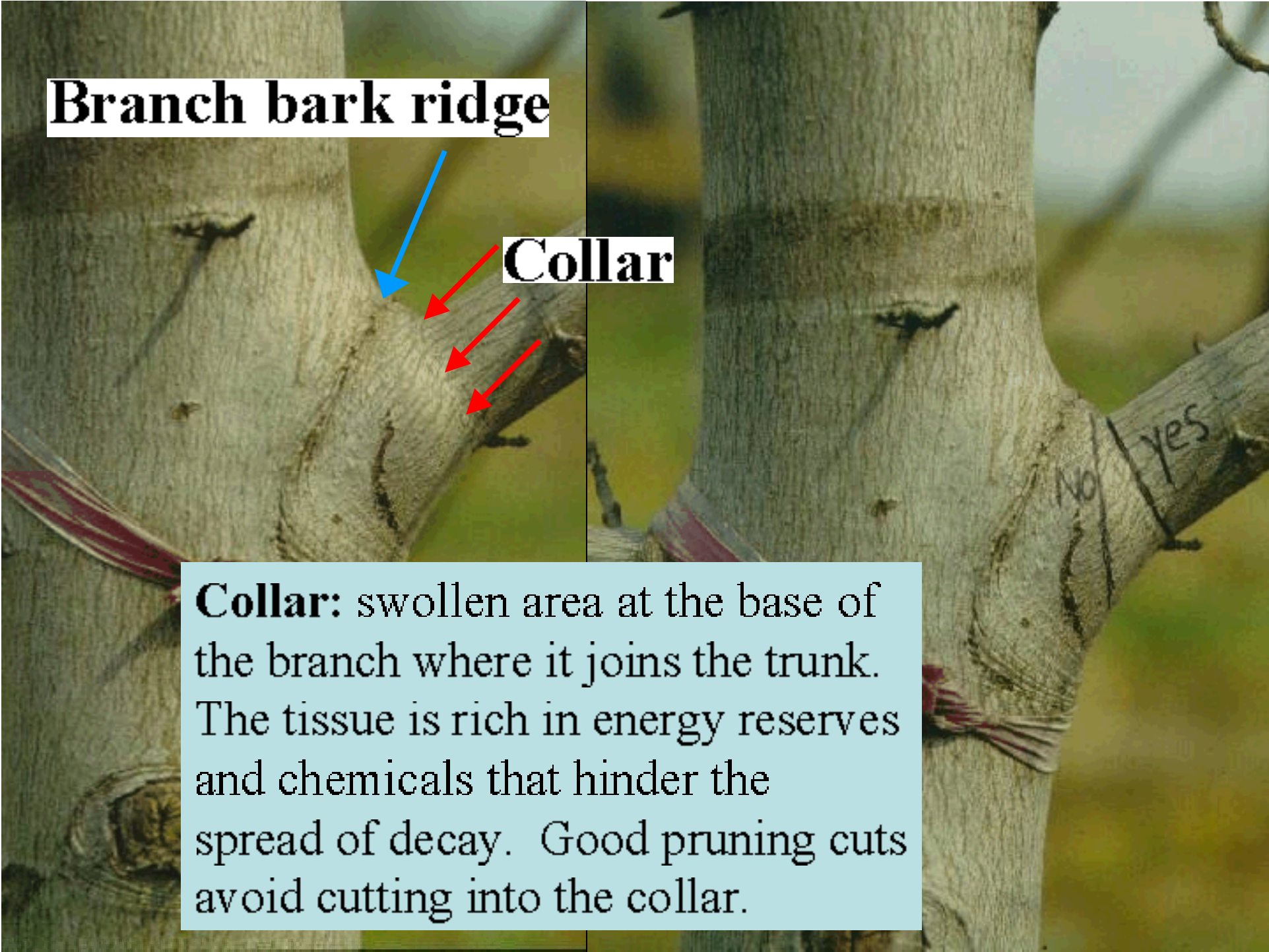
Make a topcut farther out on the limb.

Step 3

Remove the stub with final cut, being careful not to cut flush against the trunk.

Leave the collar intact.





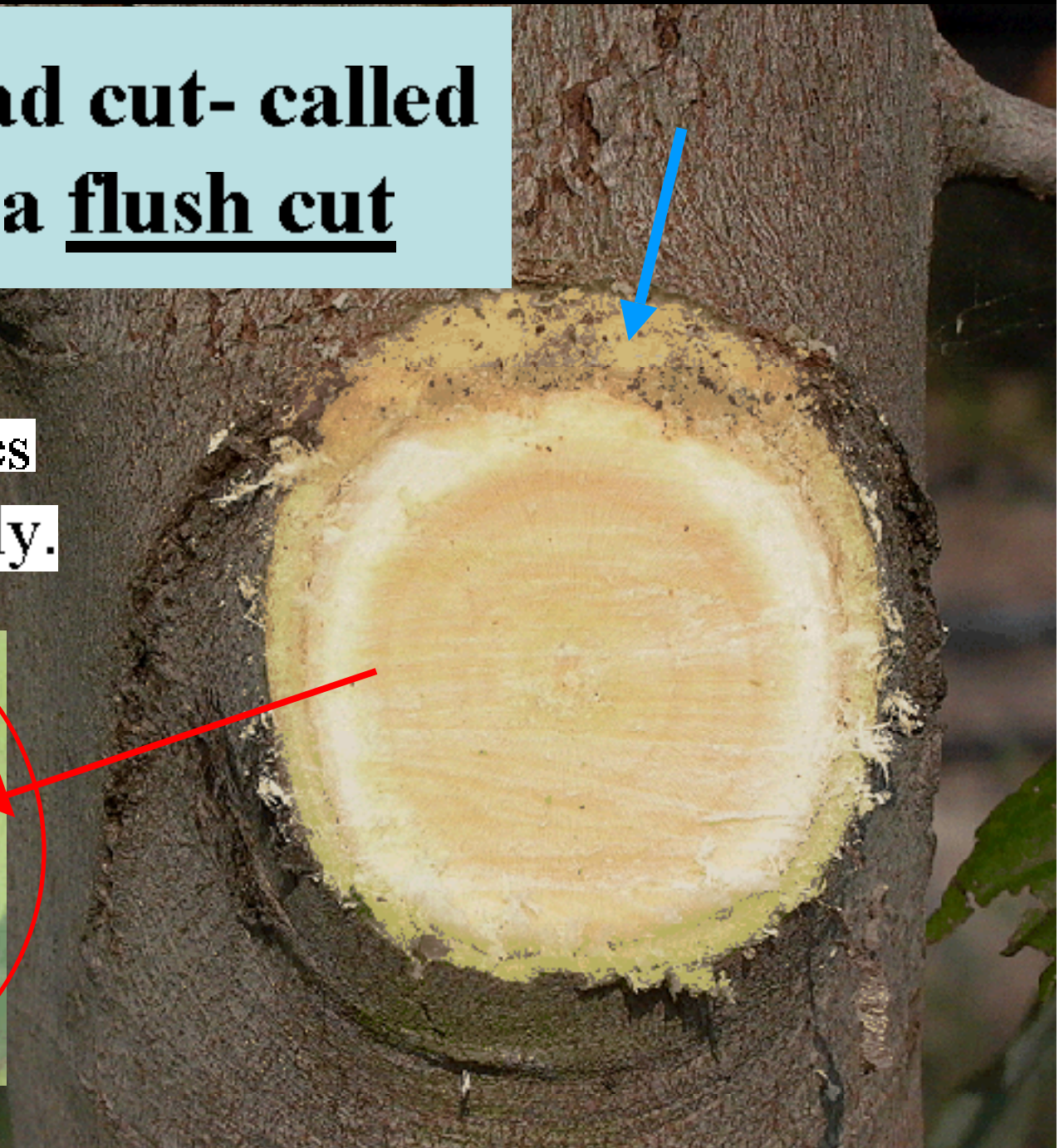
Branch bark ridge

Collar

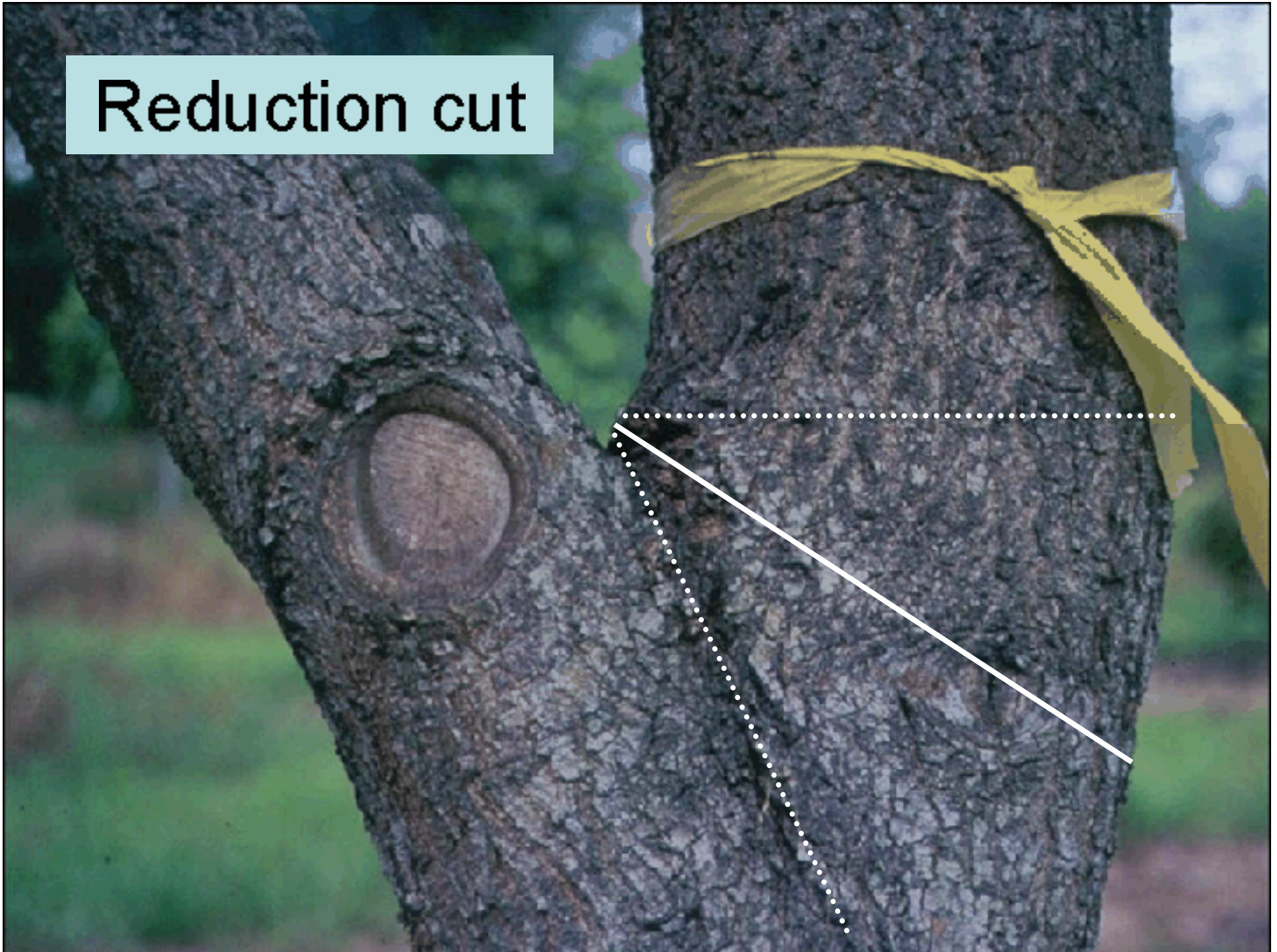
Collar: swollen area at the base of the branch where it joins the trunk. The tissue is rich in energy reserves and chemicals that hinder the spread of decay. Good pruning cuts avoid cutting into the collar.

**Bad cut- called
a flush cut**

**Wound wood does
not develop evenly.**



Reduction cut



Pruning strategies

- Execution

- Prioritize which trees to prune

- Decide location of lowest permanent limb

- temporary branch management vs. permanent branch management*



Prioritize:

**Structural pruning not
as important on these**

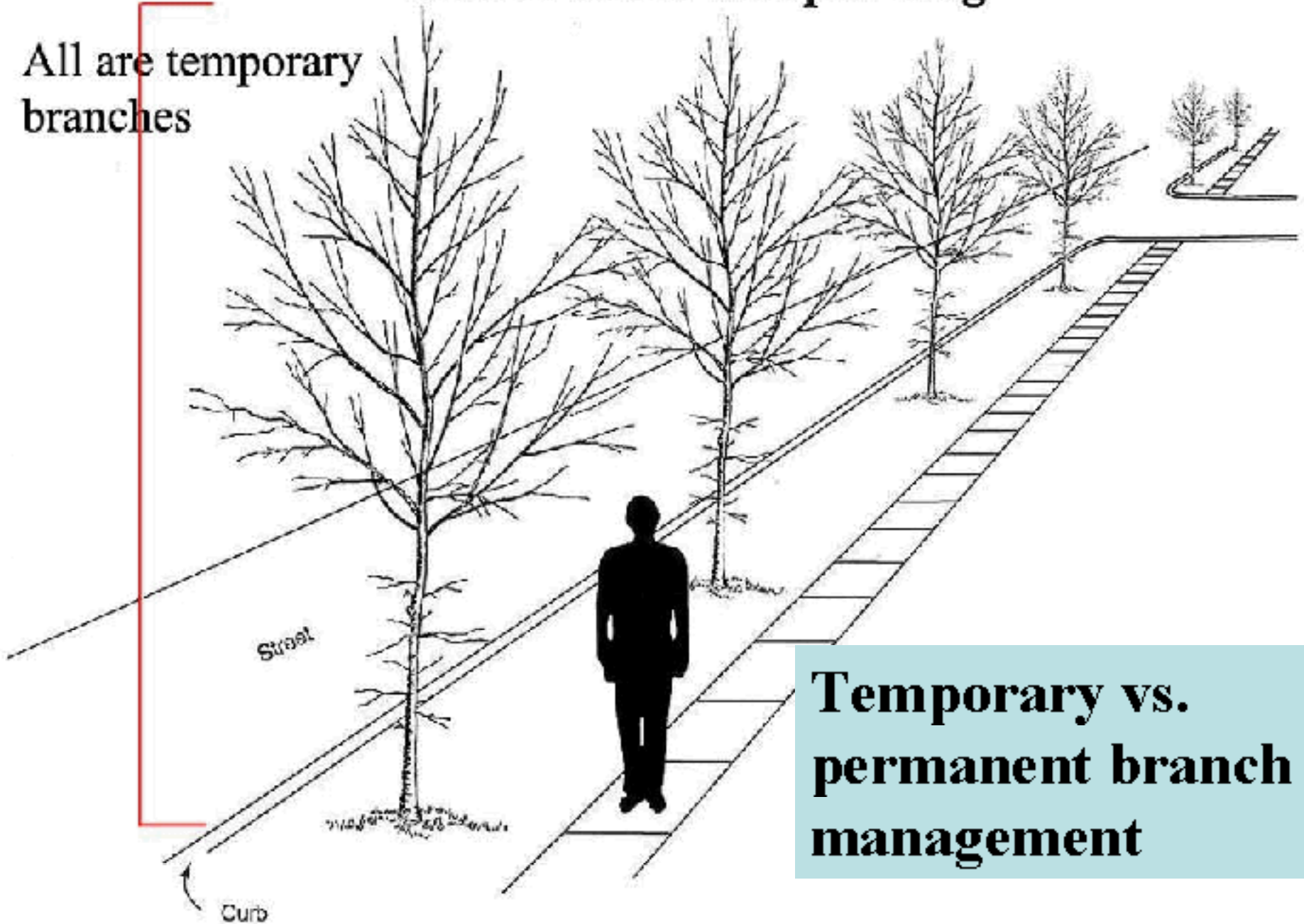


Temporary vs. permanent branch management

Keep in mind that all branches will eventually be
removed on trees less than 4'' caliper

Recent street tree planting

All are temporary
branches



**Temporary vs.
permanent branch
management**

Pruning Plan: First 5 years

Most branches are temporary.

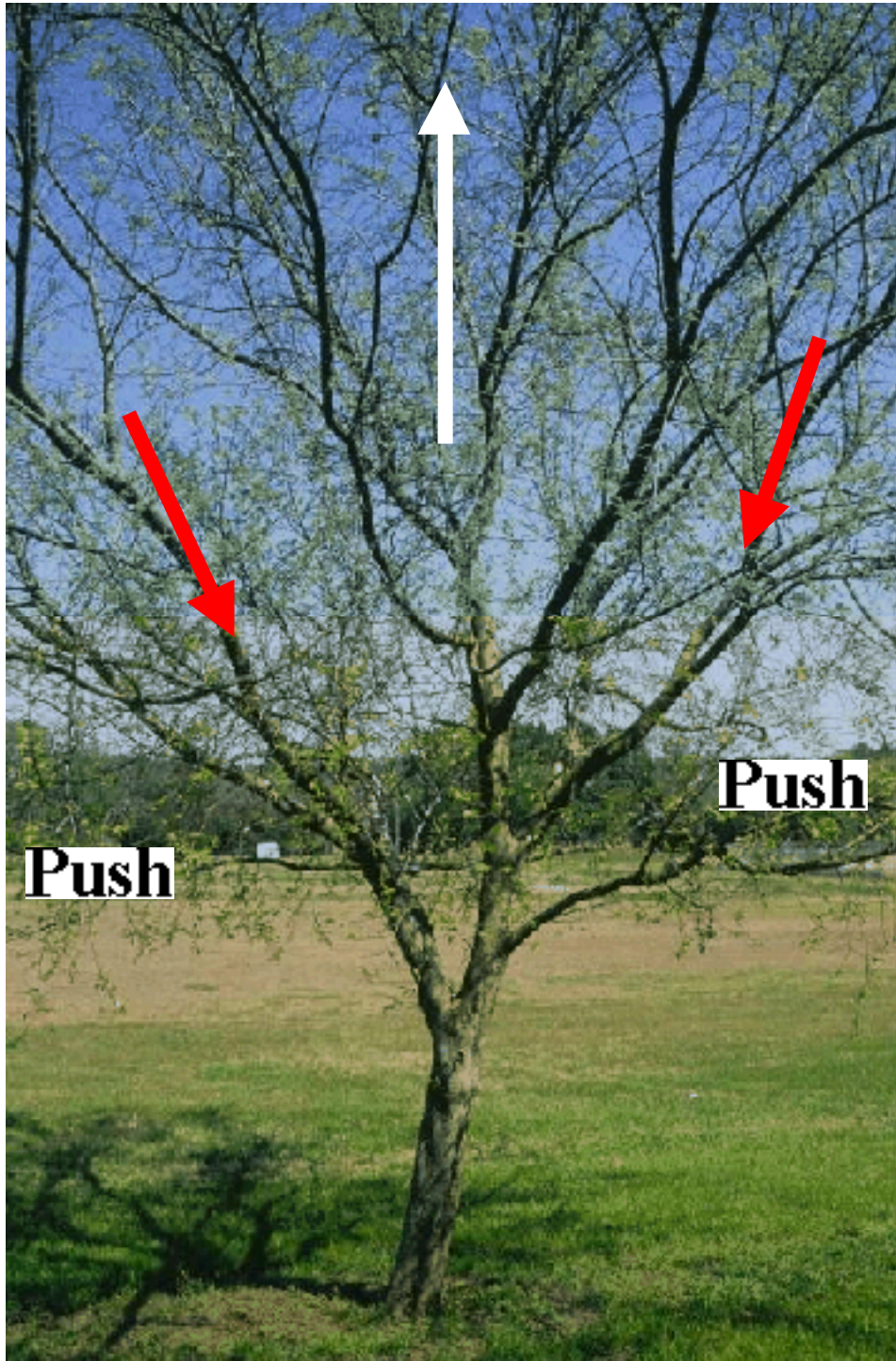
Do not remove more than 35% of live foliage at a pruning visit.

Reduce all branches greater than $\frac{1}{2}$ trunk diameter.

Reduce and/or remove all branches or stems competing with the one selected to be the leader.

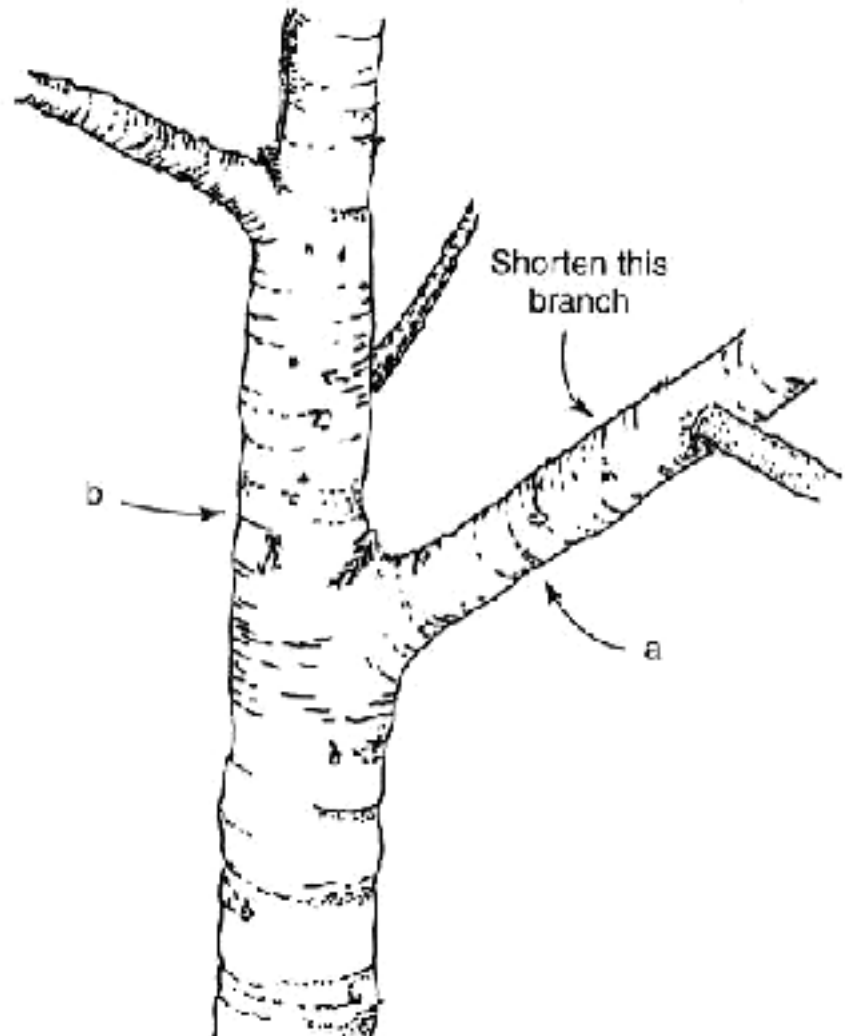
Reduce and/or remove large, low vigorous branches.

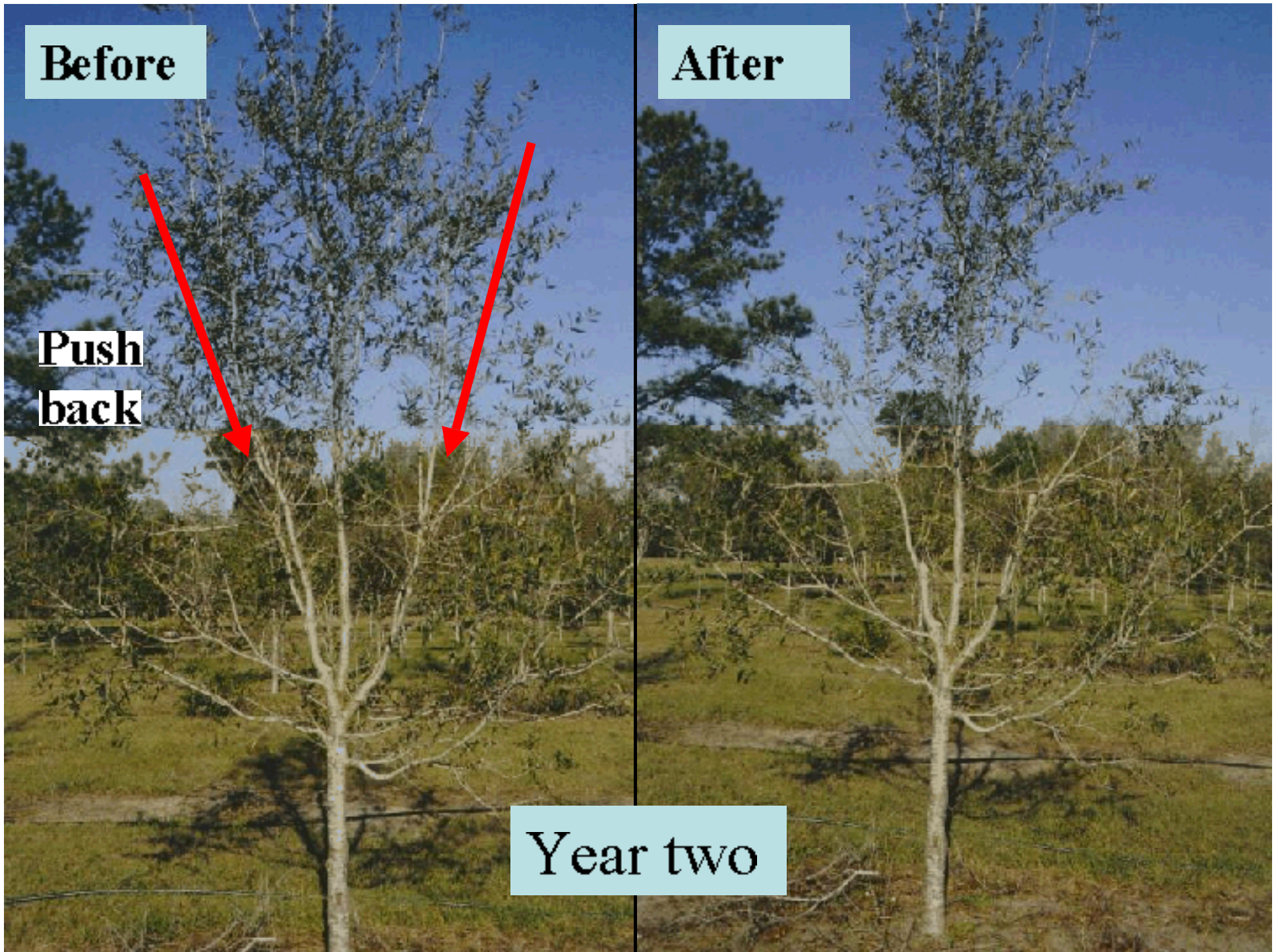
Remove broken, cracked or severely damaged branches.



Reduce growth rate of low aggressive branches

Keep branches less than half the trunk diameter





Before

After

**Push
back**

Year two

Before



Structural pruning is a three step process:

1. Identify the stem that will make the best leader.

2. Identify which stems are competing with this leader.

3. Decide where to shorten these competing stems.

Before



After



With dedication to a management plan, your community can become a model for others

